



THE SIERRA FUND

Due Diligence Process for Public Acquisition of Mining-Impacted Landscapes

April 9, 2019

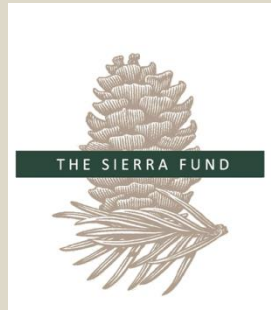




Legacy Mines in California

Gold Rush (1849)

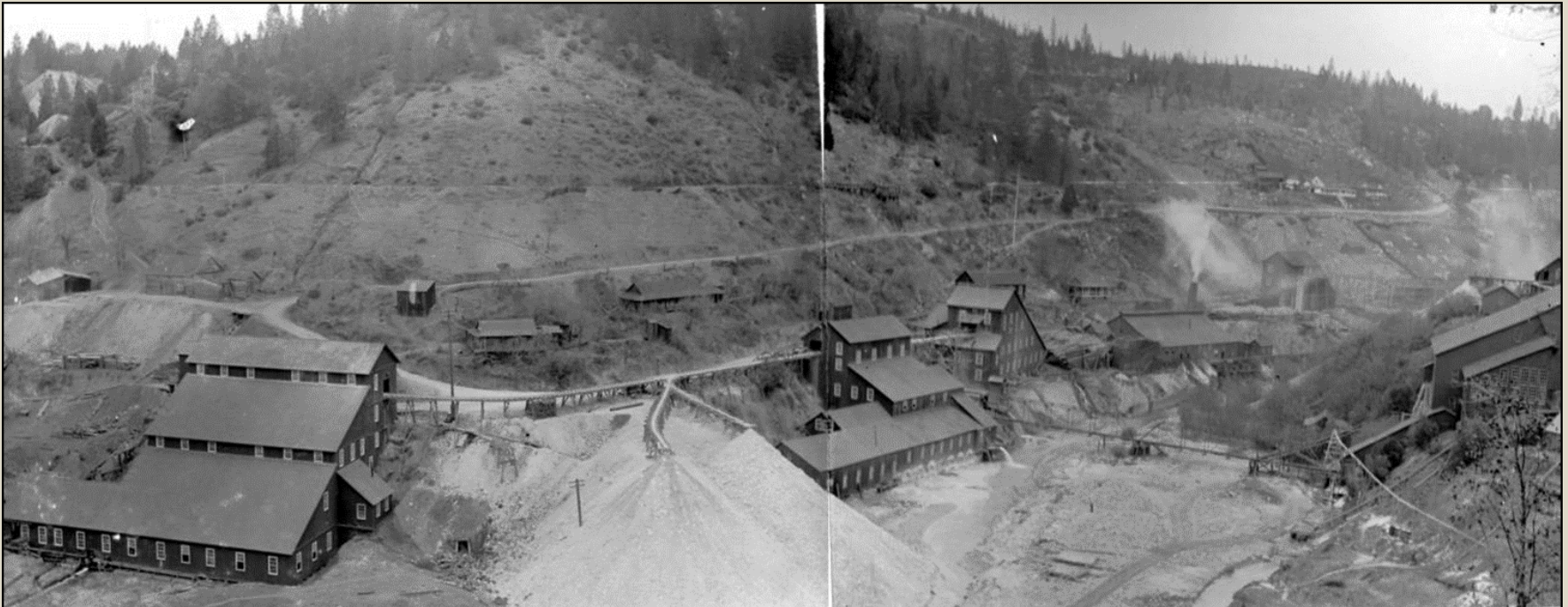
-47,000 AML in CA





Methods of Assessment

- Phase 1 CERCLA fails to detect water quality contamination
- Historical analysis to inform judgmental sampling



Legend

As

- Below Sierra Nevada Background Levels (<22 ppm)
- Above Sierra Nevada Background (>22 ppm)

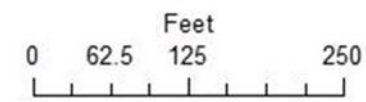
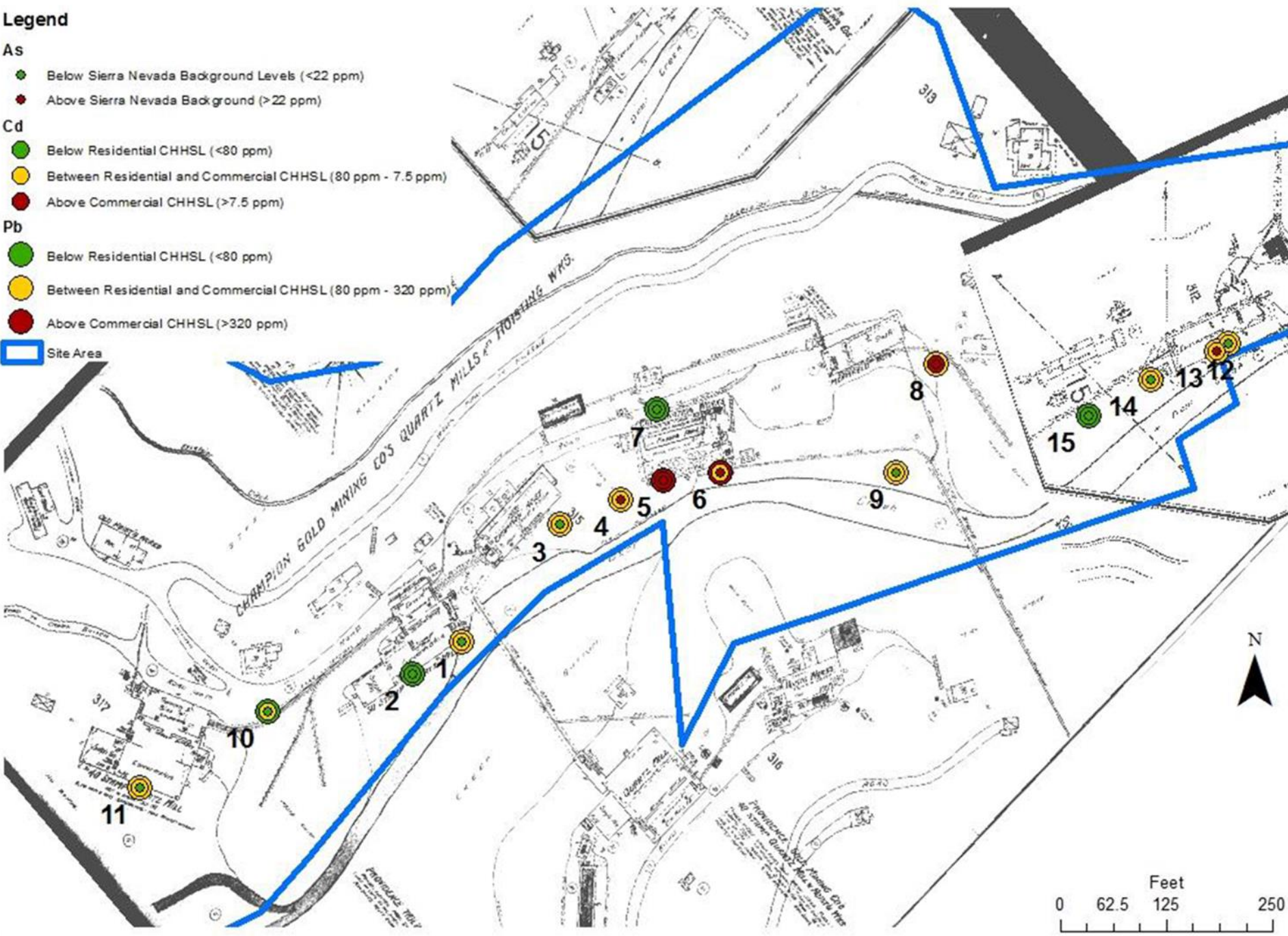
Cd

- Below Residential CHHSL (<80 ppm)
- Between Residential and Commercial CHHSL (80 ppm - 7.5 ppm)
- Above Commercial CHHSL (>7.5 ppm)

Pb

- Below Residential CHHSL (<80 ppm)
- Between Residential and Commercial CHHSL (80 ppm - 320 ppm)
- Above Commercial CHHSL (>320 ppm)

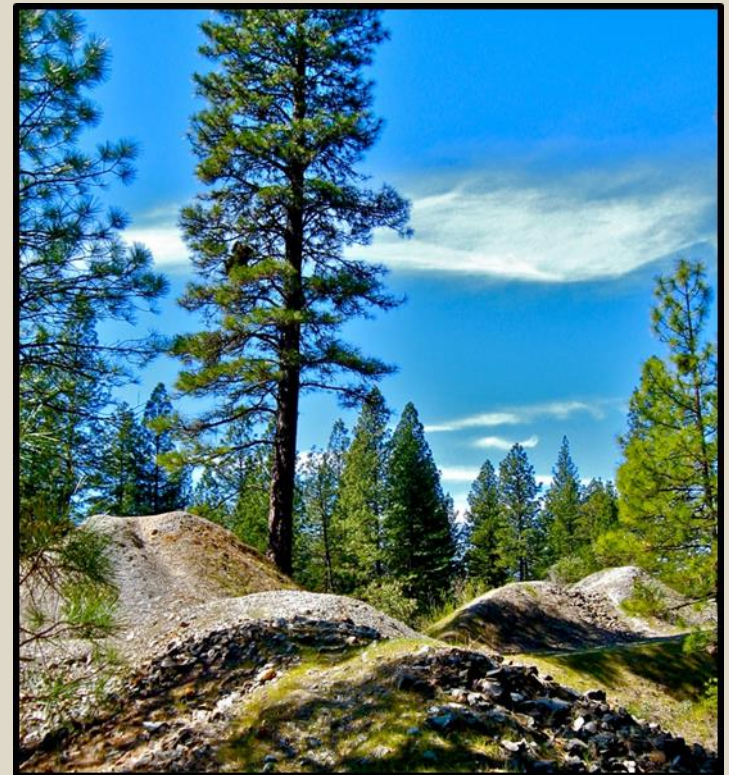
Site Area





Assessment informs Sale

- Used to estimate clean-up costs and appropriate re-use
- Purchase agreements can be used to minimize liability and maximize clean-up opportunities





Assessment Best Practices

STEP 1 - Describe the Property

STEP 2 - Assemble Interdisciplinary Team

STEP 3 – Prepare for Field Visit

STEP 4 –Field Visit with **Interdisciplinary team**

STEP 5 – Define Potential Reuse Options

STEP 6: Collect Data Needed to Determine Liability

STEP 7: Refine Re-use Options Based on Assessment Findings



Interdisciplinary Team

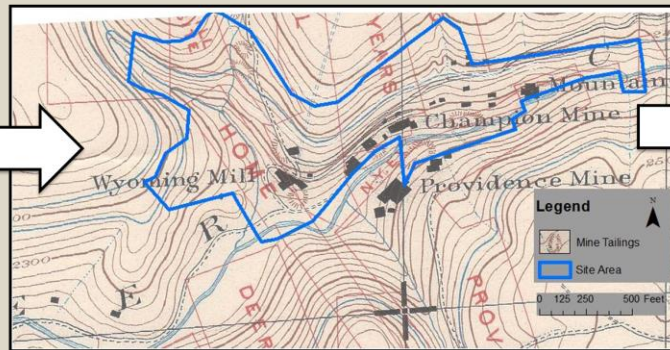
- (1) conduct historical document review,
- (2) identify cultural resources
- (3) identify species and habitat,
- (4) identify CEQA requirements,
- (5) identify runoff and discharge features,
- (6) research potential remediation options, and
- (7) identify potential end-use(s).





Comprehensive list of

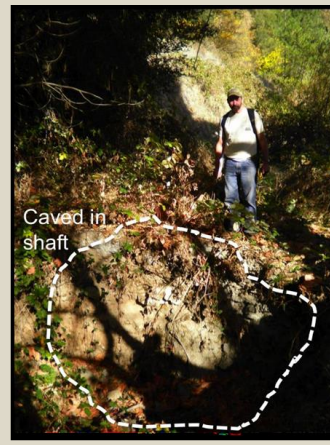
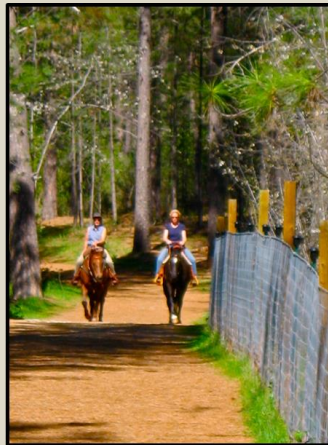
- ❑ mine features,
- ❑ ecological features
- ❑ cultural features





Remediation

- Community resiliency
- Protects public health
- Maximizes Public Benefit for conservation, recreation and habitat





Contact Us!

The Sierra Fund

103 Providence Mine Road, Suite 101

Nevada City, CA 95959

www.sierrafund.org

carrie.monohan@sierrafund.org